



USGA RULES GOVERN ALL PLAY

(Except where modified by local rules)

- Tree lines are played as lateral hazards marked by red stakes and/or lines.
- Out of bounds is defined by public roadways.
- Proper golf attire and non-metal spikes are required.
- Please no private coolers.
- A driver's license is required to operate a golf cart.
- Please always use cart paths around tees and greens, and on all Par 3 holes.
- Please fill divots with sand, rake bunkers, and repair ball marks on greens.

PLEASE COME BACK AND PLAY WITH US AGAIN!



WARNING!

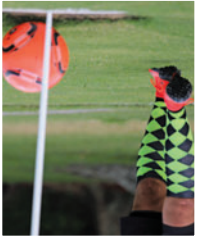
Dangerous wildlife are common and inhabit these areas and waterways. Please keep your distance!

If you have a health emergency, please call 911 immediately.

**Home to the PGA Tour
Walt Disney World®
Golf Classic, 1971-2012**

Joe Lee, Course Architect, 1972

For Tee Times or Lessons
(407) WDW-GOLF
www.golfwdw.com



Inquire about playing FootGolf at *Disney's Oak Trail* golf course. Family outings, celebrations, corporate outings, team-building, and fundraising events too. Fun for the whole family, everyone can participate, and no prior knowledge or experience is required!

FootGolf



If you don't have time to play 18, but are looking to fit 9 holes of golf into your day, then try our Sunrise 9 promotion, which includes a breakfast sandwich and two drinks. Sunset 9 golfers will enjoy 9 holes of golf, a hotdog and a drink, for as low as \$35+tax.

Sunrise/Sunset 9

Look out for our *Walt Disney World®* golf character themed refreshment carts! Stock up on the course to keep you under par and well hydrated, or swing by one of our service locations after your round to tally up the scores and enjoy something to eat.

Food & Beverage



The Player's Club is Orlando's best value golf membership. It includes complimentary range balls, 15% off merchandise, 20% off food and beverage, complimentary instructional clinics, discounted greens fees, and much more. All of this for as low as \$29 per month!

Player's Club

The pro shops at *Walt Disney World®* Golf have all of the latest styles and fashions from the top names in golf. We have the equipment you need for your round of golf today as well as great mementos of your visit to the *Walt Disney World®* Resort. Our merchandise is exclusive to the *Walt Disney World®* golf shops and cannot be found anywhere else.

Merchandise

Instruction

We offer one-hour private lessons, group clinics, half and full-day golf schools, video analysis, as well as on-course instruction. Contact our PGA Director of Instruction at (407) 454-5096 to schedule your *Walt Disney World®* golf lesson.

| HOLE | | 1 | 2 | 3▲ | 4 | 5🚻 | 6 | 7▲ | 8 | 9 | OUT |
|--------------------|----------|----------|-----------|----------|-----------|-----------|-----------|-----------|----------|----------|-----------|
| Blue | 72.3/133 | 512 | 170 | 402 | 377 | 386 | 352 | 156 | 523 | 383 | 3261 |
| White | 70.1/130 | 493 | 150 | 368 | 364 | 367 | 332 | 117 | 503 | 363 | 3057 |
| Gold | 68.5/125 | 468 | 125 | 352 | 351 | 348 | 312 | 105 | 483 | 343 | 2887 |
| Red | 69.7/119 | 420 | 119 | 286 | 274 | 297 | 255 | 92 | 440 | 303 | 2486 |
| | | | | | | | | | | | |
| | | | | | | | | | | | |
| | | | | | | | | | | | |
| | | | | | | | | | | | |
| PAR | | 5 | 3 | 4 | 4 | 4 | 4 | 3 | 5 | 4 | 36 |
| | | | | | | | | | | | |
| | | | | | | | | | | | |
| Men's Hcp | | 3 | 15 | 7 | 9 | 11 | 13 | 17 | 1 | 5 | |
| Ladies' Hcp | | 7 | 15 | 9 | 11 | 5 | 13 | 17 | 1 | 3 | |

Date: ▲ = Shelter 🚻 = Restroom/AED GOLF ASSOCIATES INC. (800) 438-8726



| HOLE | 10 | 11▲ | 12 | 13🚻 | 14 | 15 | 16▲ | 17 | 18 | IN | TOTAL | HCP | NET |
|--------------------|-----------|------------|-----------|-----------|-----------|----------|-----------|----------|----------|--------------|--------------|-----|-----|
| Blue | 387 | 444 | 206 | 395 | 515 | 381 | 196 | 532 | 428 | 3484 | 6745 | | |
| White | 373 | 429 | 182 | 345 | 485 | 345 | 165 | 503 | 397 | 3224 | 6281 | | |
| Gold | 343 | 414 | 166 | 315 | 455 | 327 | 146 | 485 | 372 | 3023 | 5910 | | |
| Red | 329 | 390 | 108 | 285 | 422 | 285 | 137 | 421 | 314 | 2691 | 5177 | | |
| | | | | | | | | | | | | | |
| | | | | | | | | | | | | | |
| | | | | | | | | | | | | | |
| | | | | | | | | | | | | | |
| PAR | 4 | 4/5 | 3 | 4 | 5 | 4 | 3 | 5 | 4 | 36/37 | 72/73 | | |
| | | | | | | | | | | | | | |
| | | | | | | | | | | | | | |
| Men's Hcp | 18 | 2 | 14 | 16 | 12 | 8 | 10 | 6 | 4 | | | | |
| Ladies' Hcp | 4 | 14 | 18 | 10 | 12 | 8 | 16 | 6 | 2 | | | | |

Scorer: _____ Attest: _____